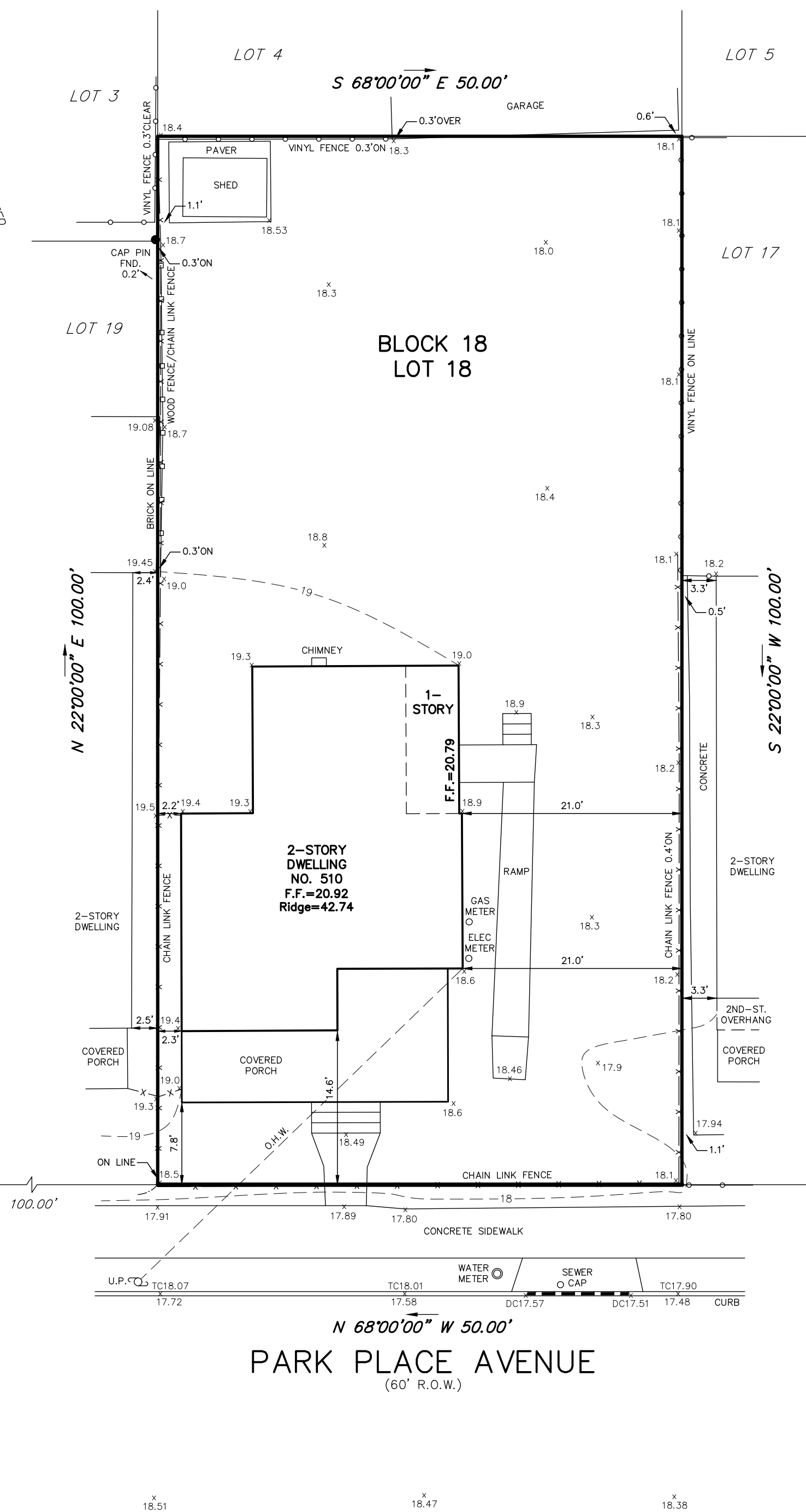


HAMMOND AVENUE
(50' R.O.W.)



NOTE: ELEVATIONS BASED ON NAVD'88 DATUM, TIED TO RM DM7184

TOPOGRAPHIC SURVEY			
510 PARK PLACE AVENUE LOT 18 BLOCK 18			
BOROUGH OF BRADLEY BEACH		MONMOUTH COUNTY	
NEW JERSEY			
Charles Surmonte P.E. & P.L.S. New Jersey Professional Engineer and Land Surveyor License No. 35885			301 Main Street, 2nd Floor Allenhurst, New Jersey, 07711 Phone 732-660-0606 Fax 732-660-0404
PROJECT No.	DATE:	SCALE:	SHEET:
24-817	09-09-24	1"=10'	1 OF 1