

BLOCK: 82
LOTS: 14.01

Architect
CHRIS RUDMAN ARCHITECT
11 TOPAZ DRIVE JACKSON, NJ 08527
732.331.9790
CHRISRUDMAN96@GMAIL.COM

issued for	date
REVIEW	2.20.25
PLANNING BOARD	3.10.26

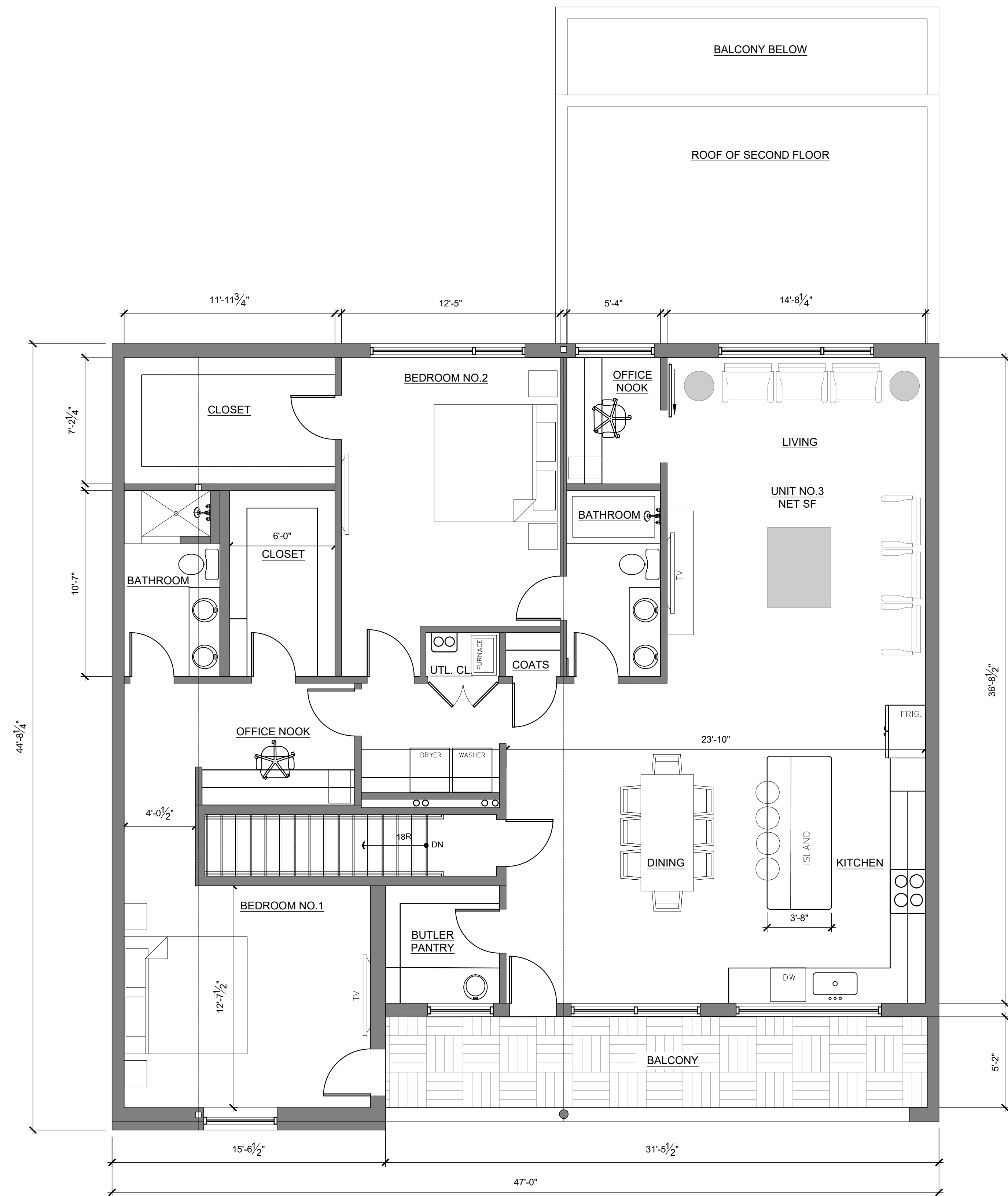
CONSTRUCTION DOCUMENT NOTE
THIS DRAWING IS A SINGLE PART OF AN INTEGRATED SET OF CONSTRUCTION CONTRACT DOCUMENTS. REFER TO ALL DRAWING AND SPECIFICATION SHEETS INCLUDING BUT NOT LIMITED TO "GENERAL CONDITIONS" AND "SUMMARY OF WORK", AND APPLICABLE SPECIFICATION SECTIONS WHICH APPLY TO THIS DRAWING. REFER TO ALL DOCUMENTS FOR THE COMPLETE SCOPE OF WORK. THE CONTRACTOR WILL BE RESPONSIBLE FOR ALL INFORMATION CONTAINED IN THE SET OF DOCUMENTS. THIS DRAWING IS SCHEMATIC AND IS NOT TO BE USED AS A SHOP DRAWING. ALTERATIONS FROM THAT SHOWN REQUIRED TO COORDINATE WITH OTHER TRADES OR TO CONFORM TO ACTUAL SITE CONDITIONS ARE THE CONTRACTOR'S RESPONSIBILITY. ELECTRICAL, MECHANICAL, AND PLUMBING ENGINEERS SHALL ADAPT THIS DESIGN FOR THE ACTUAL SITE REQUIREMENTS. THIS INCLUDES SIZING OF ALL PIPES AND HVAC UNIT SIZES BASED ON LOCALITY AND LOCAL CODE REQUIREMENTS. VERIFY THE LOCATIONS OR DIMENSIONS OF ALL ARCHITECTURAL AND STRUCTURAL ELEMENTS WITH THE ARCHITECTURAL AND STRUCTURAL DRAWINGS ISSUED. THE SHOWING OF THESE ELEMENTS ARE FOR REFERENCE ONLY, AND ARE TO BE VERIFIED PRIOR TO DESIGN OR CONSTRUCTION. NO LIABILITY IS ASSUMED BY THE INDICATION OF THE ELEMENTS IN THESE DRAWINGS.

seal
Copyright © 2026. All rights reserved. No part of this drawing may be reproduced or distributed in any form or by any means without written permission from Chris Rudman.
CHRIS RUDMAN, AIA
NJ Lic # 21A1017765

THINKERS, LLC
13 MAIN STREET
BRADLEY BEACH, NJ
NEW APARTMENT BUILDING
drawing title

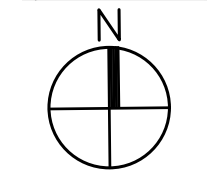
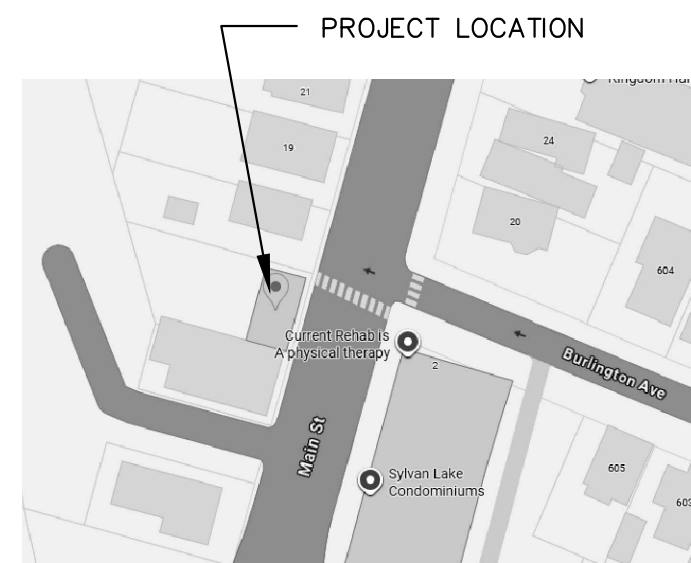
FIRST AND SECOND FLOOR PLAN

project no 25003.00
sheet no. **A1.01**



1 THIRD FLOOR PLAN
SCALE: 1/4" = 1'-0"

key plan



BLOCK: 82
LOTS: 14.01

Architect

**CHRIS RUDMAN
ARCHITECT**

11 TOPAZ DRIVE JACKSON, NJ 08527 732.331.9790 CHRISRUDMAN96@GMAIL.COM

issued for	date
REVIEW	2.20.25
PLANNING BOARD	3.10.26

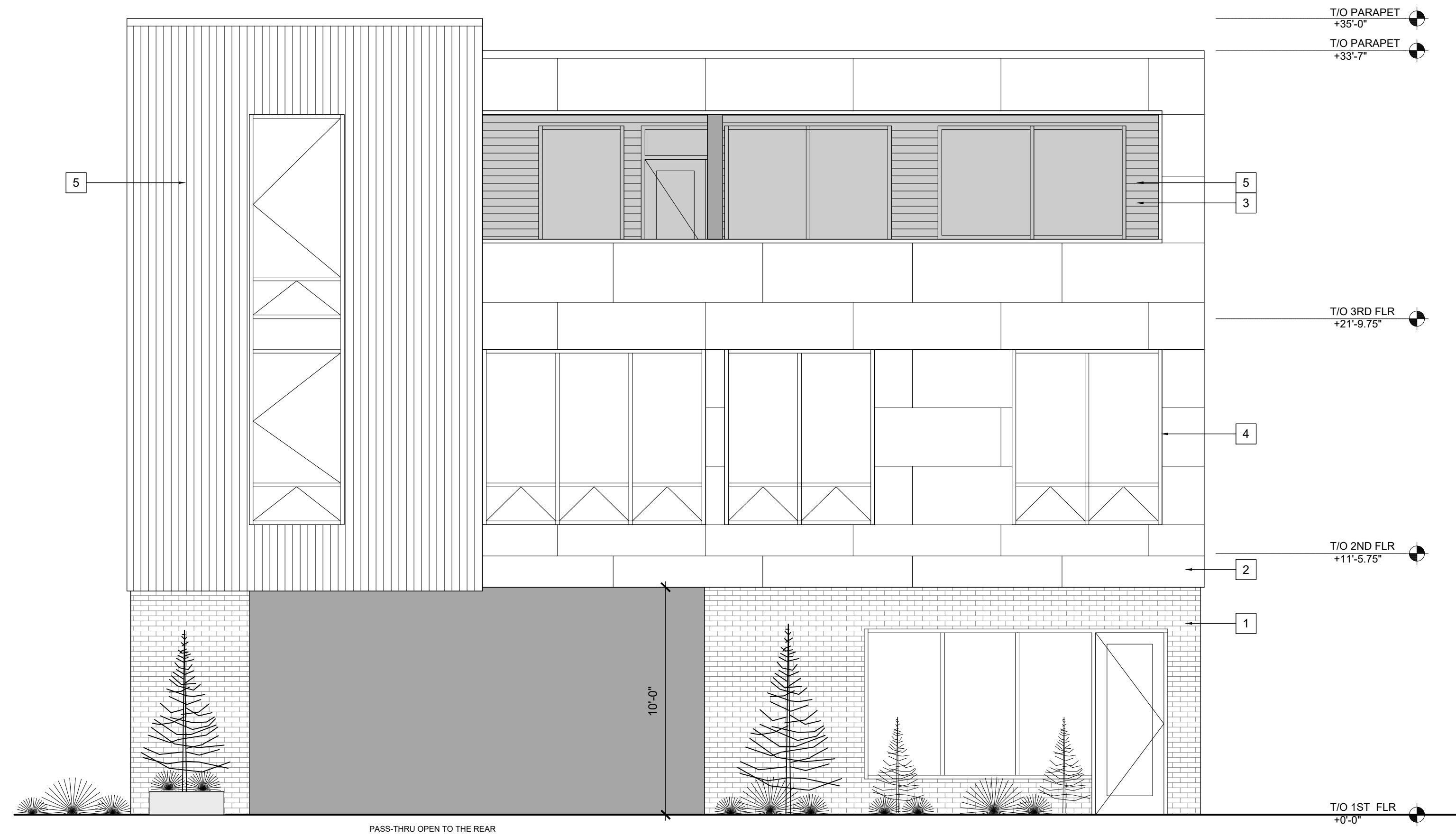
CONSTRUCTION DOCUMENT NOTE
THIS DRAWING IS A SINGLE PART OF AN INTEGRATED SET OF CONSTRUCTION CONTRACT DOCUMENTS. REFER TO ALL DRAWING AND SPECIFICATION SHEETS INCLUDING BUT NOT LIMITED TO "GENERAL CONDITIONS" AND "SUMMARY OF WORK," AND APPLICABLE SPECIFICATION SECTIONS WHICH APPLY TO THIS DRAWING. REFER TO ALL DOCUMENTS FOR THE COMPLETE SCOPE WORK. THE CONTRACTOR WILL BE RESPONSIBLE FOR ALL INFORMATION CONTAINED IN THE SET OF DOCUMENTS ISSUED. THIS DRAWING IS SCHEMATIC AND IS NOT TO BE USED AS A SHOP DRAWING. ALTERATIONS FROM THAT SHOWN REQUIRED TO COORDINATE WITH OTHER TRADES OR TO CONFORM TO ACTUAL SITE CONDITIONS ARE THE CONTRACTOR'S RESPONSIBILITY. ELECTRICAL, MECHANICAL, AND PLUMBING ENGINEERS SHALL ADAPT THIS DESIGN FOR THE ACTUAL SITE REQUIREMENTS. THIS INCLUDES SIZING OF ALL PIPES AND HVAC UNIT SIZES BASED ON LOCALITY AND LOCAL CODE REQUIREMENTS. VERIFY THE LOCATIONS OR DIMENSIONS OF ALL ARCHITECTURAL AND STRUCTURAL ELEMENTS WITH THE ARCHITECTURAL AND STRUCTURAL DRAWINGS ISSUED. THE SHOWING OF THESE ELEMENTS ARE FOR REFERENCE ONLY, AND ARE TO BE VERIFIED PRIOR TO DESIGN OR CONSTRUCTION. NO LIABILITY IS ASSUMED BY THE INDICATION OF THE ELEMENTS IN THESE DRAWINGS.

seal
Copyright © 2026. All rights reserved. No part of this drawing may be reproduced or distributed in any form or by any means without written permission from Chris Rudman.
CHRIS RUDMAN, AIA
NJ Lic # 21A1017765

THINKERS, LLC

13 MAIN STREET
BRADLEY BEACH, NJ
NEW APARTMENT BUILDING
drawing title

THIRD FLOOR PLAN



1 EAST (FRONT) ELEVATION
SCALE: 1/4" = 1'-0"



3 EAST (FRONT) RENDERING
SCALE: 1/4" = 1'-0"



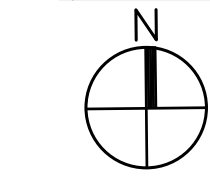
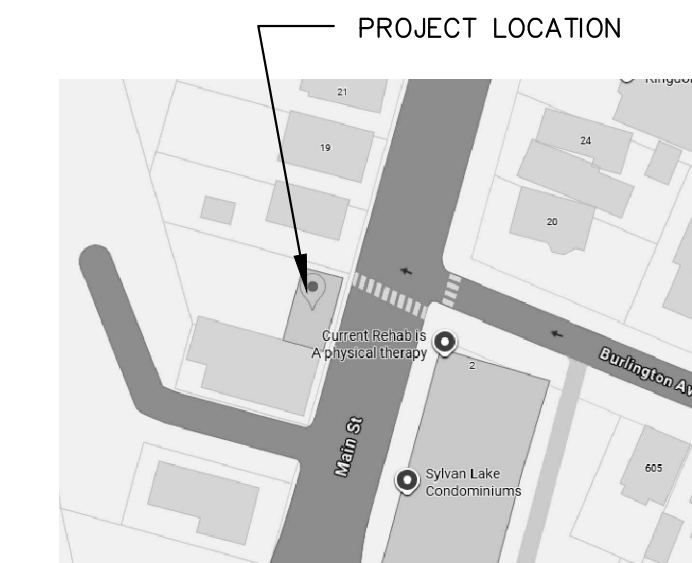
2 WEST (REAR) ELEVATION
SCALE: 1/4" = 1'-0"

ELEVATION NOTES:

REFERS TO KEYNOTE

1. BRICK
2. FIBER CEMENT PANELS
3. THIRD FLOOR BALCONY
4. BLACK ALUMINUM WINDOWS
5. EXTERIOR RATED WOOD COMPOSITE SIDING
6. VINYL SIDING

key plan



BLOCK: 82
LOTS: 14.01

Architect

**CHRIS RUDMAN
ARCHITECT**

11 TOPAZ DRIVE JACKSON, NJ 08527 732.331.9790 CHRISRUDMAN96@GMAIL.COM

issued for	date
REVIEW	2.20.25
PLANNING BOARD	3.10.26

CONSTRUCTION DOCUMENT NOTE

THIS DRAWING IS A SINGLE PART OF AN INTEGRATED SET OF CONSTRUCTION CONTRACT DOCUMENTS. REFER TO ALL DRAWING AND SPECIFICATION SHEETS INCLUDING BUT NOT LIMITED TO "GENERAL CONDITIONS" AND "SUMMARY OF WORK", AND APPLICABLE SPECIFICATION SECTIONS WHICH APPLY TO THIS DRAWING. REFER TO ALL DOCUMENTS FOR THE COMPLETE SCOPE WORK. THE CONTRACTOR WILL BE RESPONSIBLE FOR ALL INFORMATION CONTAINED IN THE SET OF DOCUMENTS ISSUED. THIS DRAWING IS SCHEMATIC AND IS NOT TO BE USED AS A SHOP DRAWING. ALTERATIONS FROM THAT SHOWN REQUIRED TO COORDINATE WITH OTHER TRADES OR TO CONFORM TO ACTUAL SITE CONDITIONS ARE THE CONTRACTOR'S RESPONSIBILITY. ELECTRICAL, MECHANICAL, AND PLUMBING ENGINEERS SHALL ADAPT THIS DESIGN FOR THE ACTUAL SITE REQUIREMENTS. THIS INCLUDES SIZING OF ALL PIPES AND HVAC UNIT SIZES BASED ON LOCALITY AND LOCAL CODE REQUIREMENTS. VERIFY THE LOCATIONS OR DIMENSIONS OF ALL ARCHITECTURAL AND STRUCTURAL ELEMENTS WITH THE ARCHITECTURAL AND STRUCTURAL DRAWINGS ISSUED. THE SHOWING OF THESE ELEMENTS ARE FOR REFERENCE ONLY, AND ARE TO BE VERIFIED PRIOR TO DESIGN OR CONSTRUCTION. NO LIABILITY IS ASSUMED BY THE INDICATION OF THE ELEMENTS IN THESE DRAWINGS.

seal

Copyright © 2026. All rights reserved. No part of this drawing may be reproduced or distributed in any form or by any means without written permission from Chris Rudman.

CHRIS RUDMAN, AIA
NJ Lic # 21A1017765

THINKERS, LLC

13 MAIN STREET
BRADLEY BEACH, NJ

NEW APARTMENT BUILDING

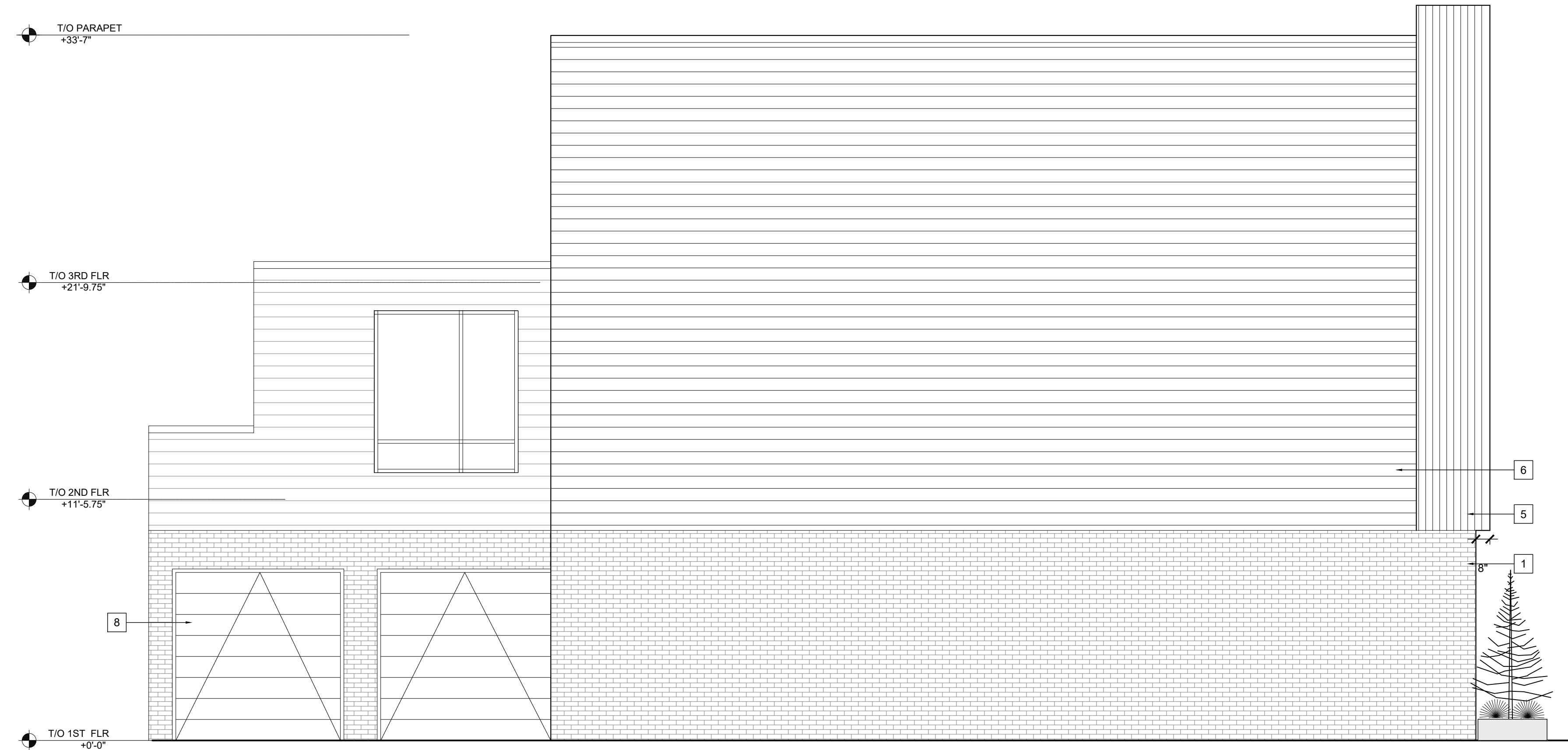
drawing title

EXTERIOR ELEVATIONS

project no 25003.00

sheet no.

A2.01

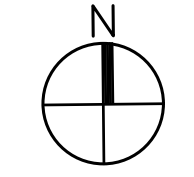
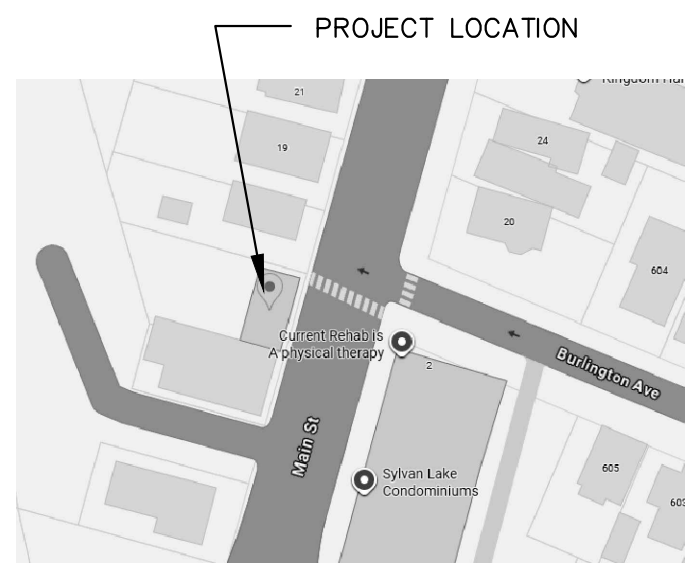


1 SOUTH (SIDE) ELEVATION
SCALE: 1/4" = 1'-0"

ELEVATION NOTES: # REFERS TO KEYNOTE

1. BRICK
2. FIBER CEMENT PANELS
3. THIRD FLOOR BALCONY
4. BLACK ALUMINUM WINDOWS
5. EXTERIOR RATED WOOD COMPOSITE SIDING
6. VINYL SIDING
7. OVERHEAD GARAGE DOORS

key plan



BLOCK: 82
LOTS: 14.01

Architect

**CHRIS RUDMAN
ARCHITECT**

11 TOPAZ DRIVE JACKSON, NJ 08527 732.331.9790 CHRISRUDMAN96@GMAIL.COM

issued for	date
REVIEW	2.20.25
PLANNING BOARD	3.10.26

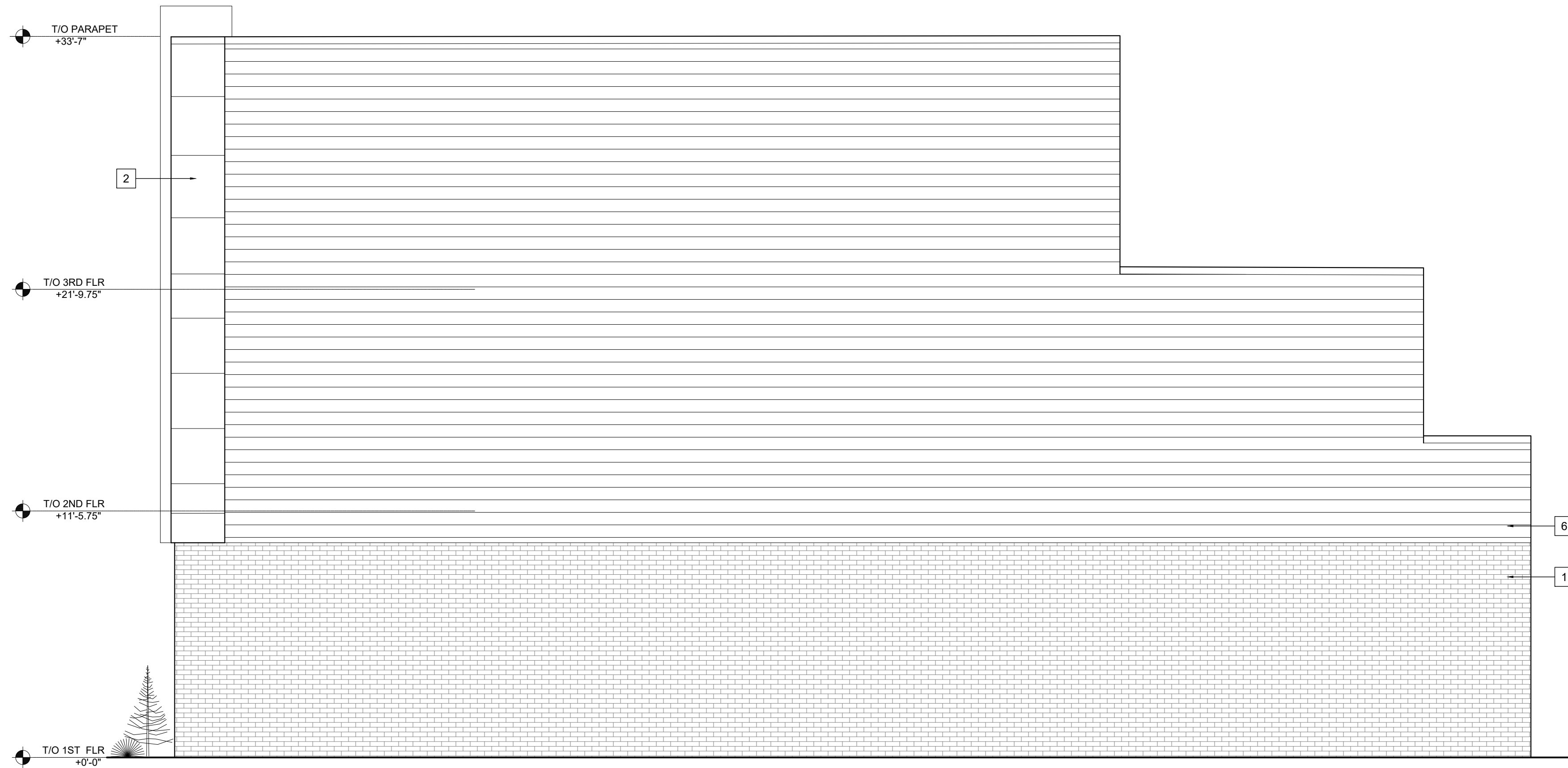
CONSTRUCTION DOCUMENT NOTE

THIS DRAWING IS A SINGLE PART OF AN INTEGRATED SET OF CONSTRUCTION CONTRACT DOCUMENTS. REFER TO ALL DRAWING AND SPECIFICATION SHEETS INCLUDING BUT NOT LIMITED TO "GENERAL CONDITIONS" AND "SUMMARY OF WORK", AND APPLICABLE SPECIFICATION SECTIONS WHICH APPLY TO THIS DRAWING. REFER TO ALL DOCUMENTS FOR THE COMPLETE SCOPE OF WORK. THE CONTRACTOR WILL BE RESPONSIBLE FOR ALL INFORMATION CONTAINED IN THE SET OF DOCUMENTS ISSUED. THIS DRAWING IS SCHEMATIC AND IS NOT TO BE USED AS A SHOP DRAWING. ALTERATIONS FROM THAT SHOWN REQUIRED TO COORDINATE WITH OTHER TRADES OR TO CONFORM TO ACTUAL SITE CONDITIONS ARE THE CONTRACTOR'S RESPONSIBILITY. ELECTRICAL, MECHANICAL, AND PLUMBING ENGINEERS SHALL ADAPT THIS DESIGN FOR THE ACTUAL SITE REQUIREMENTS. THIS INCLUDES SIZING OF ALL PIPES AND HVAC UNIT SIZES BASED ON LOCALITY AND LOCAL CODE REQUIREMENTS. VERIFY THE LOCATIONS OR DIMENSIONS OF ALL ARCHITECTURAL AND STRUCTURAL ELEMENTS WITH THE ARCHITECTURAL AND STRUCTURAL DRAWINGS ISSUED. THE SHOWING OF THESE ELEMENTS ARE FOR REFERENCE ONLY, AND ARE TO BE VERIFIED PRIOR TO DESIGN OR CONSTRUCTION. NO LIABILITY IS ASSUMED BY THE INDICATION OF THESE ELEMENTS IN THESE DRAWINGS.

seal

Copyright © 2026. All rights reserved. No part of this drawing may be reproduced or distributed in any form or by any means without written permission from Chris Rudman.

CHRIS RUDMAN, AIA
NJ Lic # 21A1017765



2 NORTH (SIDE) ELEVATION
SCALE: 1/4" = 1'-0"

THINKERS, LLC

13 MAIN STREET
BRADLEY BEACH, NJ

NEW APARTMENT BUILDING

drawing title

EXTERIOR ELEVATIONS

project no 25003.00

sheet no.

A2.02